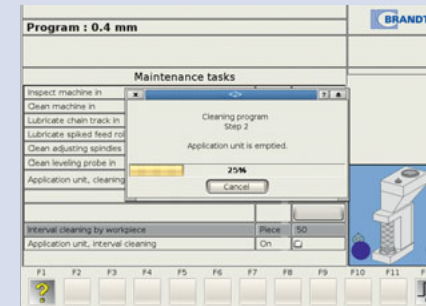
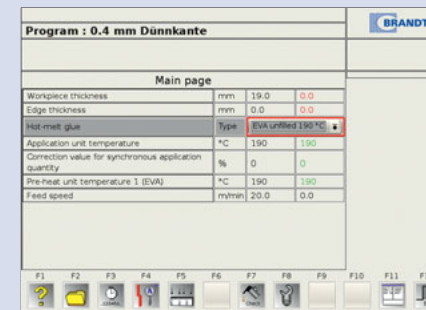


The new gluing generation – glue application as a system

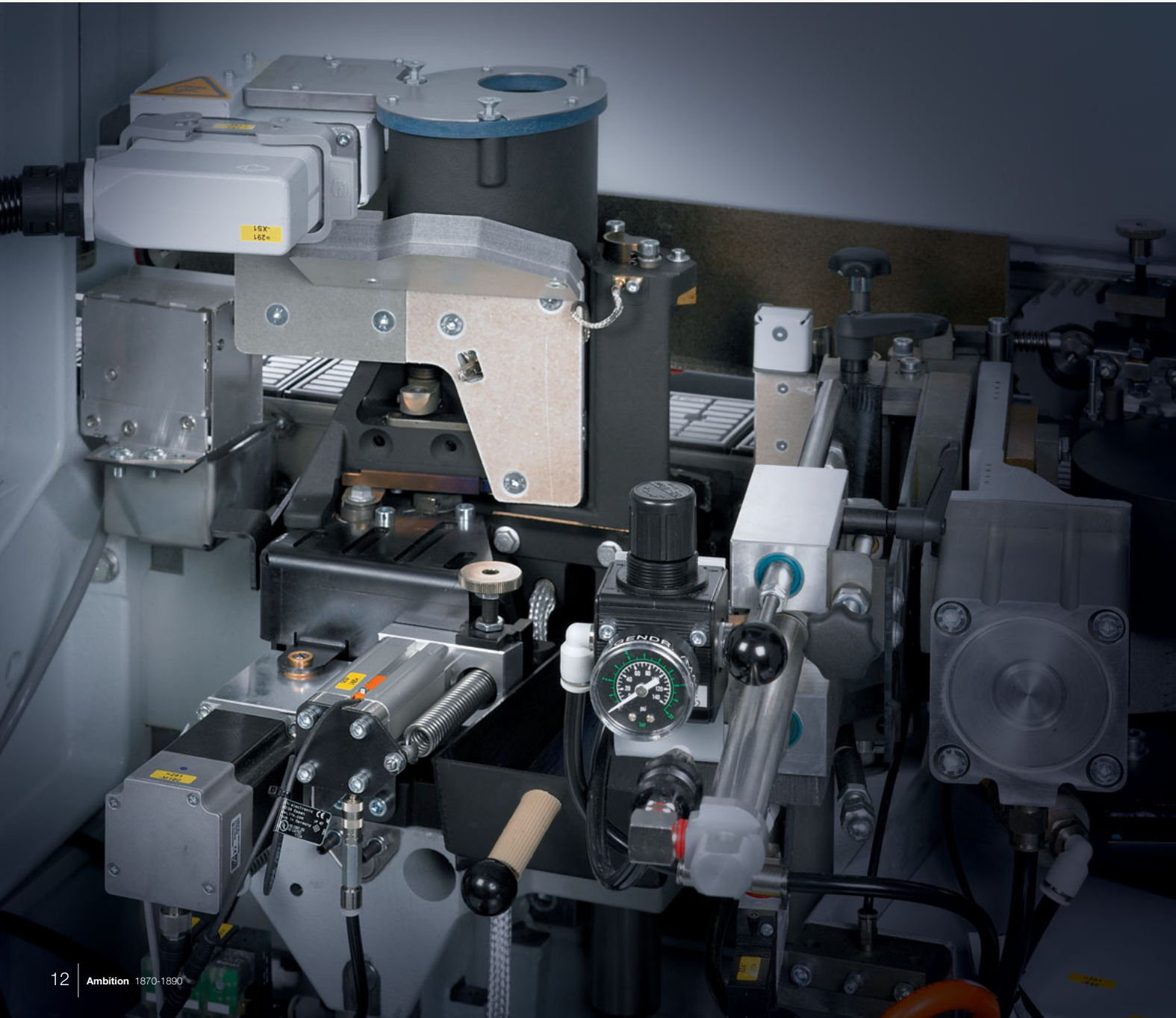
Due to today's variety of products and increasing customers' demands it has become necessary to focus on a future-oriented gluing technique. The new glue application system QA 45 meets all market requirements and offers excellent solutions for a modern interior shop or furniture production companies.

Application unit QA 45 (optional)

- Special coating of the gluing unit for all types of glue, including PUR in order to meet all customers' requirements.
- Easy and fast change over of different types of glue through an automatic draining system, in order to make use of the ideal glue type or colour based on application.
- The automatic cleaning system is activated by the PC 20+ control, in order to minimize the downtime of the machine.
- Glue amount infinitely adjustable by servo motor in order to achieve a perfect result for most different workpiece materials.
- Glue application in both directions, synchronism and antirotation for a perfect adhesion of different edge materials.



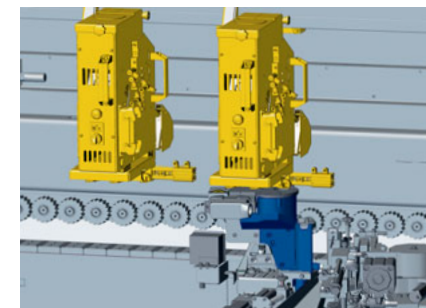
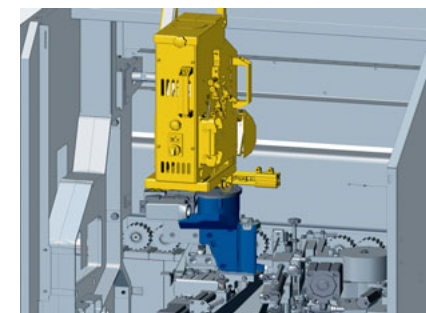
Program controlled metering, quick change of glue and easy maintenance by means of the PC 20+.



The ideal solution for each application

QA 45 – EVA

- EVA pre-melting unit for hot melt glues
- Filling capacity approx. 4 ltrs. granulated hot melt glue

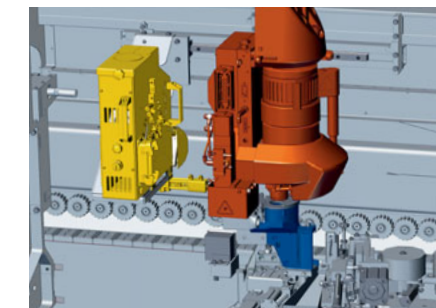
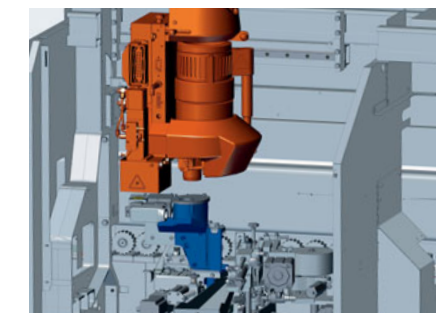


QA 45 – EVA 2

- 2 Quick Melt pre-melting units with traversing device for hot melt glues
- Filling capacity approx. 4 ltrs. granulated hot melt glue per melting unit

QA 45 – PU

- PU pre-melting unit
- Chemcoat antioxidation coating of the glue melting container.
- Container size: 2 kg slugs



QA 45 – PU & EVA

- PU and EVA pre-melting units with traversing device

QA 45 – Manual

- The application unit is filled by hand either with granulated glue, or, with glue slugs
- Flexible application of different hot melt adhesives, like EVA, PU or Polyolefine based glue or different glue colours

