



## What has input got to do with inspiration?

Quite simple: if you don't have to think long about what you input, you'll have a clear head for new inspiration. A new module of the HOLZMA control software CADmatic 4.1 PROFESSIONAL promises just that.



# Fast, easy and immediate: “Manual Production List”

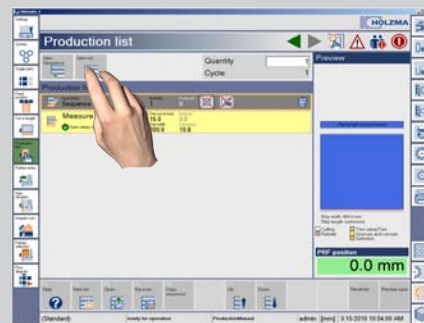
Whether grooving, rabbeting or cutting to length, the “Manual Production List” module allows you to control all the functions of your panel saw using just one input screen. No need to keep changing from one control module to another and no need to create a cutting pattern first. The ideal solution for spontaneous processing ideas.



Creating a new list



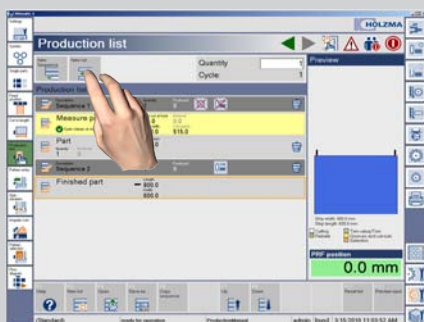
Adding a new strip



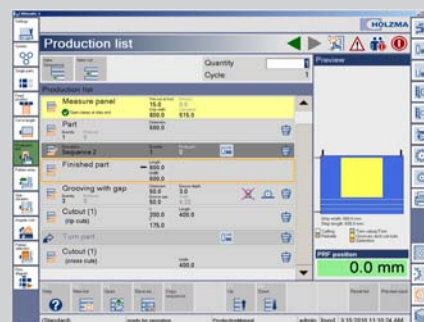
Adding the first part



Changing an entry in the list



Starting the editor for grooving and cut-outs



Finished production list

## The facts at a glance

- the “Manual Production List” module allows you to control all the functions of your saw using just one input screen
- the module is now available as an option for the HOLZMA machine control CADmatic 4.1 PROFESSIONAL
- all saws with CADmatic 4.1 PROFESSIONAL can be upgraded with this module
- including 2D, real-time moving graphics
- all input data can be saved, so that all the work steps can be repeated

## One input screen for all work steps\*

- single cuts
- processing finished parts
- grooving/turbo-grooving and rabbeting
- cut-outs
- cutting to length
- checkerboard cutting

\* depending on the range of functions of the saw

