

# WBZ 160 flexLine - Processing and more!

**Our Special  
2012**

**starting  
191.890,- €**

prices ex works  
plus additional country specific  
modifications and taxes

The WBZ 160 flexLine beam processing station is an all round talent in roofing production as well as house fabrication and nail plate press connections.

We are offering the WBZ 160 flexLine with a wide range of tools incl. dove tail routers, printing and marking system as well as extensive software package at a special low price.

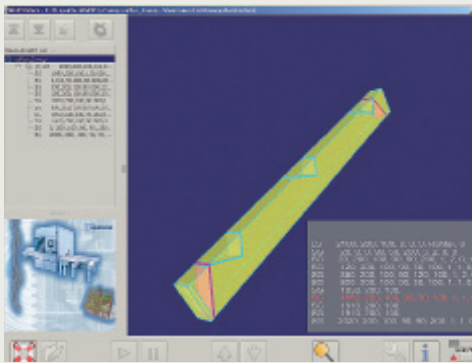
## Highlights:

- Wide product range for the panel industry.  
Cutting of trusses walls, gables, roofs, ceilings and timber connection
- Utilisation ratio of 98%
- Safety concept by an enclosed and sound-protected cabinet with a monitored machine safety access
- Extensive processings: rebates, rafter bolt drillings, lap joints, drillings, rafter ends (convex and concave) etc.
- Precise infeed and outfeed
- Machine expansion and upgrades possible due to a modular assembly

## wupWORKS 4.0:

With wupWORKS 4.0 BTL files from a desired CAD program are read. A 3D graphic and optional touchscreen make the operators work a lot easier. The control system also adopts the optimisation:

- material optimising
- process optimising
- filtering of assigned parts
- Usage of offcuts for standard parts



Work piece length:	0-13,2 m
Min. material section:	20x50 mm
Max. material section:	200x405 mm (optional 455 mm)
Tool changer	12-fold
Main spindle sawing:	7,5 kW, 5-axis
Processing spindle:	12 kW, 4-axis
Processing possibilities:	sawing; routing; drilling; marking; labelling



The sawing system enabled a multitude of processings (e.g. compound angles, birds mouth, longitudinal cuts).



The versatile tool changer optimises your existing applications and makes the WBZ a highly flexible solution for any timber frame manufacturer.



Regardless of whether it is used for trusses, wall panels or beam processing, our WBZ beam processing station makes every job simple.



## WEINMANN

Holzbausystemtechnik GmbH  
Forchenstr. 50  
D-72813 St. Johann - Lonsingen  
Tel.: + 49 7122 82 94 0  
Fax: + 49 7122 82 94 52 066  
info@weinmann-partner.de  
www.weinmann-partner.de